

# MiWind Product Catalog PDF

Commercial airflow equipment families



EQUIPMENT FAMILIES

5

PRODUCT SERIES

29

MODEL ENTRIES

29

USE

Product catalog

## CATALOG SCOPE

Equipment families and available local model data.

- This catalog lists every public MiWind equipment series currently published on the site.
- Technical values are copied from the local product dataset. Where a value is not verified, the catalog marks it as confirm by model instead of inventing a number.
- Certification, warranty, lead time, fan curves, electrical options, and project submittal documents must be confirmed against the selected model and sales channel.

## PRODUCT INDEX

Five equipment families.

### Air Curtains

17 series / 17 model entries

Door air curtains for commercial openings.

### Ventilation Fan

6 series / 6 model entries

Inline and cabinet fans for ducted airflow.

### Dehumidifiers

2 series / 2 model entries

Commercial moisture-control equipment.

### Fresh Air and ERV

2 series / 2 model entries

Fresh air and recovery ventilation units.

### Exhaust Fans

2 series / 2 model entries

Ceiling and wall exhaust fans.

# Air Curtains

Air curtains for retail doors, service entrances, cold-room openings, and light industrial access points.

## SERIES AND MODEL PARAMETERS

Use these rows to select the right product page before requesting model documents.



### Q Cross-Flow Air Curtain Series

#### Q Cross-Flow Air Curtain

Cross-flow door air curtain for shops, restaurants, and common commercial entrances that need a compact unit, metal housing, and uniform discharge across the opening.

**Model: Q Series**

Airflow: Uniform cross-flow discharge; confirm exact model airflow

Voltage: Confirm the US voltage option

Dimensions: Confirm inch dimensions by model

Weight: Confirm shipping and installed weight

Mounting: Surface-mounted door unit; verify bracket and header clearance

Controls: Confirm switch, sensor, and wiring options



### S Heavy-Duty Air Curtain Series

#### S Heavy-Duty Air Curtain

S series air curtain for commercial openings that need a slim metal body, low-noise operation, remote-control option, and published model sizes from 900 mm to 2000 mm.

**Model: S Series**

Airflow: 1400-4000 m<sup>3</sup>/h high speed; 1100-3200 m<sup>3</sup>/h low speed

Voltage: 220-240 V, 50/60 Hz model table; confirm US electrical option

Power: 92-210 W by model and speed

Sound: 40-54 dB by model and speed

Dimensions: 900/1000/1200/1500/1800/2000 x 158 x 184 mm model sizes

Weight: 7.5-14.7 kg net weight; 8.5-15.8 kg gross weight

Mounting: Surface-mounted unit; mounting height 2.5-3.0 m

Controls: Switch and remote variants listed as FM-12xxS and FM-12xxS/Y



### B Rust-Resistant Air Curtain Series

#### B Rust-Resistant Air Curtain

Restaurant and commercial entry air curtain with rust-resistant casing, optimized duct path, and motor details to verify before project use.

**Model: B Series**

Airflow: Confirm CFM by model

Voltage: Confirm the US voltage option

Dimensions: Confirm inch dimensions by model

Weight: Confirm shipping and installed weight

Mounting: Surface-mounted unit; verify casing size and clearance

Controls: Confirm switch, remote, and any special-duty control package



### D Commercial Air Curtain Series

#### D Commercial Air Curtain

Commercial door air curtain for high-frequency mall, warehouse, and distributor entrance projects where width, traffic, and motor documents need early review.

**Model: D Series**

Airflow: Confirm CFM by model

Voltage: Confirm the US voltage option

Dimensions: Confirm inch dimensions by model

Weight: Confirm shipping and installed weight

Mounting: Surface-mounted unit; verify bracket, width, and wiring path



### Q6 Powerful Air Curtain Series

#### Q6 Powerful Air Curtain

Powerful Q-series air curtain for restaurant and retail entrances where stronger discharge, indoor comfort, and frequent doorway traffic need review together.

**Model: Q6 Series**

Airflow: Higher-velocity Q-series airflow; confirm model table

Voltage: Confirm the US voltage option

Dimensions: Confirm inch dimensions by model

Weight: Confirm shipping and installed weight

Mounting: Surface-mounted entrance air curtain; verify header and width

Controls: Confirm switch, sensor, and wiring package



### X5 Centrifugal Air Curtain Series

#### X5 Centrifugal Air Curtain

Centrifugal air curtain for taller commercial openings where discharge penetration, mounting height, sound, and motor data need tighter review.

**Model: X5 Series**

Airflow: Centrifugal airflow; confirm model fan data

Voltage: Confirm the US voltage option

Dimensions: Confirm inch dimensions by model

Weight: Confirm shipping and installed weight

Mounting: Surface-mounted unit; confirm model fit and 3.5-5 m mounting-height range



### X7 Cross-Flow Air Curtain Series

#### X7 Cross-Flow Air Curtain

Cross-flow air curtain for small-to-medium storefronts where a practical wholesale-ready model is more important than a specialized mounting path.

**Model: X7 Series**

Airflow: Cross-flow discharge; confirm model table

Voltage: Confirm the US voltage option

Dimensions: Confirm inch dimensions by model

Weight: Confirm shipping and installed weight

Mounting: Surface-mounted unit; verify header clearance



### A5 Restaurant Air Curtain Series

#### A5 Restaurant Air Curtain

A5 cross-flow air curtain for restaurant doors where comfort, odor separation, and straightforward installation are the main selection points.

**Model: A5 Series**

Airflow: Uniform cross-flow discharge; confirm model table

Voltage: Confirm the US voltage option

Dimensions: Confirm inch dimensions by model

Weight: Confirm shipping and installed weight

Mounting: Surface-mounted restaurant entrance unit



### Ceiling Mounted Air Curtain Series

#### Ceiling Mounted Air Curtain

Ceiling mounted air curtain for constrained headers, recessed ceiling plans, and projects where the air curtain should stay visually integrated with the ceiling while door width, mounting height, and service access are checked.

**Model: Ceiling Series**

Airflow: Confirm CFM by model

Voltage: Confirm the US voltage option

Dimensions: Confirm ceiling cassette dimensions by width class, finished opening width, and current model table

Weight: Confirm shipping and installed weight

Mounting: Ceiling mounted / recessed; verify access panel, ceiling opening, and service clearance



### A3 Heating Air Curtain Series

#### A3 Heating Air Curtain

Heated entrance air curtain for comfort-driven doors where the air barrier, warm-air function, voltage, and controls must be reviewed together.

**Model: A3 Heating Series**

Airflow: Confirm CFM by model

Voltage: Confirm the US voltage option

Dimensions: Confirm inch dimensions by model

Weight: Confirm shipping and installed weight

Mounting: Surface-mounted heated unit; verify clearances

Heating: Confirm heating capacity and voltage



### Industrial Air Curtain Series

#### Industrial Air Curtain

Industrial air curtain for factory gates and large service openings where dust, humidity, temperature swing, mounting structure, and service clearance shape the selection.

**Model: Industrial Series**

Airflow: Confirm CFM by model

Voltage: Confirm the US voltage option

Dimensions: Confirm inch dimensions by model

Weight: Confirm shipping and installed weight

Mounting: Industrial mounting; verify structure, height, and service clearance



### F Door-Mounted Air Curtain Series

#### F Door-Mounted Air Curtain

F series door-mounted air curtain for compact commercial openings with width options from 900 mm to 2000 mm and a 2.0-3.0 m mounting-height range.

**Model: F Series**

- Airflow: Cross-flow fan; confirm exact airflow table
- Voltage: Confirm the US voltage option
- Dimensions: 900-2000 mm width range; confirm inch dimensions
- Weight: Confirm shipping and installed weight
- Mounting: Door mounted; mounting height 2.0-3.0 m



### Pro D Commercial Air Curtain Series

#### Pro D Commercial Air Curtain

Pro D commercial air curtain for projects that need a D-series body with a stronger control and comfort selection path.

**Model: Pro D Series**

- Airflow: Confirm Pro D airflow table by model
- Voltage: Confirm the US voltage option
- Dimensions: Confirm inch dimensions by model
- Weight: Confirm shipping and installed weight
- Mounting: Surface-mounted commercial unit; verify height and mounting
- Controls: Confirm control package and wiring before project use



### C Series Air Curtain

#### C Series Air Curtain

C series air curtain for general commercial doorway selection where versatility, value, and international supply details matter before model data.

**Model: C Series**

- Airflow: Confirm C Series airflow table by model
- Voltage: Confirm the US voltage option
- Dimensions: Confirm inch dimensions by model
- Weight: Confirm shipping and installed weight
- Mounting: Surface-mounted unit; verify doorway width and header

**E Air Curtain Series**



**E Air Curtain**

E series cross-flow air curtain for OEM programs, with width range from 0.6 m to 2.0 m and customization options.

**Model: E Series**

Airflow: Cross-flow performance; confirm exact model data

Voltage: Confirm the US voltage option

Dimensions: 0.6-2.0 m width options; confirm current size list

Weight: Confirm shipping and installed weight

Mounting: Surface-mounted unit; verify header and wiring path

**Cold Storage Air Curtain Series**



**Cold Storage Air Curtain**

Cold-room air curtain for temperature separation, traffic, frost, humidity, and stored-product protection review at cold-storage openings.

**Model: Cold Storage Series**

Airflow: Confirm CFM by model

Voltage: Confirm the US voltage option

Dimensions: Confirm inch dimensions by model

Weight: Confirm shipping and installed weight

Mounting: Door-mounted air curtain; verify cold-room clearance and service side

**Max D Industrial Air Curtain Series**



**Max D Industrial Air Curtain**

Max D industrial air curtain for very large factory openings where airflow capacity, door width, environmental exposure, and structural mounting need current model documents.

**Model: Max D Series**

Airflow: Extreme-airflow review requires the current model table

Voltage: Confirm the US voltage option

Dimensions: Confirm inch dimensions by model

Weight: Confirm shipping and installed weight

Mounting: Industrial structural mounting; verify door width, height, and mounting

## S Air Curtain Model Table

Air Curtains / S Heavy-Duty Air Curtain Series



### PERFORMANCE

Model	Remote	Voltage	Power	Air Volume	Air Velocity	Noise
FM-1209S	FM-1209S/Y	220-240 V	115 / 92 W	1400 / 1100 m3/h	11 / 9 m/s	50 / 40 dB
FM-1210S	FM-1210S/Y	220-240 V	116 / 93 W	1700 / 1400 m3/h	11 / 9 m/s	51 / 41 dB
FM-1212S	FM-1212S/Y	220-240 V	120 / 96 W	2000 / 1800 m3/h	11 / 9 m/s	51 / 41 dB
FM-1215S	FM-1215S/Y	220-240 V	150 / 120 W	2800 / 2200 m3/h	11 / 9 m/s	52 / 42 dB
FM-1218S	FM-1218S/Y	220-240 V	210 / 168 W	3600 / 2900 m3/h	11 / 9 m/s	53 / 43 dB
FM-1220S	FM-1220S/Y	220-240 V	210 / 168 W	4000 / 3200 m3/h	11 / 9 m/s	54 / 44 dB

SIZE AND INSTALLATION

Model	N.W.	G.W.	Unit Size	Carton Size	Mounting
FM-1209S	7.5 kg	8.5 kg	900 x 158 x 184 mm	950 x 210 x 240 mm	2.5-3.0 m
FM-1210S	8.0 kg	9.0 kg	1000 x 158 x 184 mm	1050 x 210 x 240 mm	2.5-3.0 m
FM-1212S	9.5 kg	10.5 kg	1200 x 158 x 184 mm	1250 x 210 x 240 mm	2.5-3.0 m
FM-1215S	11.7 kg	12.8 kg	1500 x 158 x 184 mm	1550 x 210 x 240 mm	2.5-3.0 m
FM-1218S	13.6 kg	14.6 kg	1800 x 158 x 184 mm	1850 x 210 x 240 mm	2.5-3.0 m
FM-1220S	14.7 kg	15.8 kg	2000 x 158 x 184 mm	2050 x 210 x 240 mm	2.5-3.0 m

---

## Fresh Air and ERV

fresh air ventilation systems and fresh air exchanger options for offices, gyms, cafes, classrooms, and multi-room projects where outdoor-air CFM, ERV fresh air intake, HRV or ERV recovery direction, filters, duct route, controls, service access, and current model documents need to stay together.

### SERIES AND MODEL PARAMETERS

Use these rows to select the right product page before requesting model documents.

---

#### Heat Recovery Ventilation Series



### Heat Recovery Ventilation Unit

Ducted heat recovery ventilation unit and fresh air exchanger for projects comparing outdoor-air volume, ERV fresh air intake, HRV sizing notes, heat recovery vent intake, exchange core, filter pack, controls, voltage, and service access.

**Model: HRV Series**

Airflow: Confirm CFM by model

Static: Confirm duct and filter pressure

Voltage: Confirm the US voltage option

Dimensions: 4/6/8 inch duct-size range; confirm exact dimensions

Weight: Confirm shipping and installed weight

Mounting: Ducted HRV / fresh-air unit; verify orientation and service side

Filter: Pre-filter, carbon filter, or HEPA filter pack; confirm selected pack

---

#### Air Filter Box Series



### Air Filter Box

Ducted air filter box for fresh-air paths and inline air duct filter requests where duct size, filter pack, service access, and pressure impact need to be reviewed together.

**Model: Filter Box Series**

Airflow: Confirm CFM by model

Static: Verify filter pressure impact by pack and model

Voltage: Confirm the US voltage option

Dimensions: 4/6/8/10 inch duct-size range; confirm exact dimensions

Weight: Confirm shipping and installed weight

Mounting: Duct-mounted filter box; confirm access direction and exact dimensions

Filter: Pre-filter, carbon filter, or HEPA filter pack

---

## Ventilation Fan

Inline, EC inline, circular, booster, HEPA, inline cabinet fan, centrifugal vent fan, and cabinet centrifugal fans for commercial inline duct fan selection, office space ventilation fans, centrifugal ventilation fan handoff, and ducted ventilation paths.

### SERIES AND MODEL PARAMETERS

Use these rows to select the right product page before requesting model documents.

---



#### Inline Duct Fan Series

### Inline Duct Fan

Mixed-flow inline duct fan for supply or exhaust runs, silent mixed-flow inline duct fan review, and pipeline fan requests that need round duct compatibility, two-speed control review, and pressure-aware fan selection.

**Model: Inline Duct Fan Series**

Airflow: Confirm CFM by model

Static: Fan curve needed for the selected pressure point

Voltage: Confirm the US voltage option

Dimensions: 4/6/8/10/12 inch options available; confirm exact dimensions

Weight: Confirm shipping and installed weight

Mounting: Inline duct mounted

Controls: Confirm 2-speed or other control package



#### EC Inline Duct Fan Series

### EC Inline Duct Fan

EC inline duct fan for offices, classrooms, gyms, restaurant support rooms, and ducted fresh-air paths where PWM speed control, temperature or humidity response, pressure path, and serviceable mounting matter.

**Model: EC Inline Duct Fan Series**

Airflow: Confirm CFM by model

Voltage: Confirm the US voltage option

Dimensions: 4/6/8 inch options available; confirm exact dimensions

Weight: Confirm shipping and installed weight

Mounting: Inline duct mounted

Controls: Confirm speed, temperature, and humidity control package



### Circular Duct Fan Series

#### Circular Duct Fan

Circular duct fan for round-duct runs where metal housing, outer-rotor motor details, size, and fan curve need coordinated review.

**Model: Circular Duct Fan Series**

Airflow: Confirm CFM by model

Voltage: Confirm the US voltage option

Dimensions: 4/5/6/8/10/12 inch options available; confirm exact dimensions

Weight: Confirm shipping and installed weight

Mounting: Circular duct mounted



### Booster Fan Series

#### Booster Fan

Booster fan for duct-assist projects, greenhouse or storage airflow support, inline duct booster paths, and mixed-flow booster review where the installer already knows target CFM, duct length, elbows, and why the run needs assistance.

**Model: Booster Fan Series**

Airflow: Confirm CFM by model

Voltage: Confirm the US voltage option

Dimensions: 4/6/8 inch options available; confirm exact dimensions

Weight: Confirm shipping and installed weight

Mounting: Inline duct assist mounting; verify installation position



### HEPA Purified Duct Fan Series

#### HEPA Purified Duct Fan

Filtered duct fan for projects where airflow, carbon filtration, HEPA filtration, two-speed control, and filter service access must align.

**Model: HEPA Purified Duct Fan Series**

Airflow: Confirm CFM by model

Voltage: Confirm the US voltage option

Dimensions: 4/6/8 inch options available; confirm exact dimensions

Weight: Confirm shipping and installed weight

Mounting: Inline duct mounted with filtration; verify service access

Filter: Carbon and HEPA filter pack; confirm selected configuration

Controls: Confirm 2-speed or other control package

## Cabinet Centrifugal Fan Series

### Cabinet Centrifugal Fan

Cabinet centrifugal fan for utility rooms, industrial ventilation, centrifugal inline fan review, centrifugal extractor fan questions, centrifugal inline exhaust fan and dual-inlet cabinet centrifugal fan document review, and pressure-driven airflow where cabinet access, phase, airflow range, and fan curve data matter.

**Model: Cabinet Centrifugal Fan Series**

Airflow: range is 2000-25000 CMH; convert and confirm exact CFM

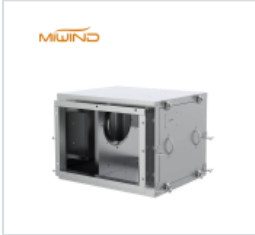
Static: Confirm fan curve and pressure class

Voltage: 1-phase or 3-phase options available; confirm US electrical fit

Dimensions: Confirm inch dimensions by model

Weight: Confirm shipping and installed weight

Mounting: Cabinet / utility fan; confirm service access and clearance



---

## Exhaust Fans

Exhaust fans for bathroom ventilation, commercial bathroom ventilation fans, utility rooms, support spaces, ceiling exhaust ventilators, wall or sidewall exhaust fan projects, duct route checks, bathroom fan noise, and current model document requests.

### SERIES AND MODEL PARAMETERS

Use these rows to select the right product page before requesting model documents.

---

#### Ceiling Mounted Exhaust Fan Series



### Ceiling Mounted Exhaust Fan

Ceiling mounted exhaust fan for bathroom duct and sound review, plastic or integrated ceiling exhaust requests, kitchen-adjacent support rooms, and small-room exhaust projects where a 300 x 300 mm reference panel and ceiling layout need review while hood-governed kitchen exhaust stays separate.

**Model: Ceiling Exhaust Series**

Airflow: Confirm CFM by model

Voltage: Confirm the US voltage option

Dimensions: 300 x 300 mm reference size; confirm inch dimensions and current size

Weight: Confirm shipping and installed weight

Mounting: Ceiling mounted / integrated mounted

---

#### Wall Mounted Exhaust Fan Series



### Wall Mounted Exhaust Fan

Wall mounted exhaust fan for utility rooms, bathrooms, side wall exhaust fan projects, and support-room exhaust where grille choice, automatic shutter behavior, wiring, duct path, and ABS housing need review.

**Model: Wall Exhaust Series**

Airflow: Confirm CFM by model

Voltage: Confirm the US voltage option

Dimensions: 6/8/10/12 inch options available; confirm exact dimensions

Weight: Confirm shipping and installed weight

Mounting: Wall mounted

Controls: Confirm auto-shutter mechanism and wiring

---

# Dehumidifiers

Residential-adjacent and light commercial dehumidifier options for basements, storage, gyms, and moisture-sensitive spaces.

## SERIES AND MODEL PARAMETERS

Use these rows to select the right product page before requesting model documents.



### Commercial Dehumidifier Sizing Series

#### Commercial Dehumidifier

Commercial dehumidifier for warehouses, gyms, hotels, offices, shopping malls, and storage rooms where capacity, drainage, timing control, and service access need model review.

**Model: Commercial Dehumidifier Series**

Airflow: Confirm CFM by model

Voltage: Confirm the US voltage option

Dimensions: Confirm inch dimensions by model

Weight: Confirm shipping and installed weight

Mounting: Freestanding or project-specific placement; verify clearance

Controls: Confirm humidistat, 24-hour timing, drainage, and electrical options



### Compact Dehumidifier Series

#### Compact Dehumidifier

Compact dehumidifier for basements, storage rooms, and smaller commercial spaces where continuous drainage, frost handling, fresh-air path, and fault self-checking need review.

**Model: Compact Dehumidifier Series**

Airflow: Confirm CFM by model

Voltage: Confirm the US voltage option

Dimensions: Confirm inch dimensions by model

Weight: Confirm shipping and installed weight

Mounting: Freestanding or project-specific placement; verify clearance

Controls: Confirm drainage, frost handling, fresh-air path, and fault self-checking functions